

GRAVITY  
SKY FOREST



**BRING THE  
HOME TO YOUR  
APARTMENT**



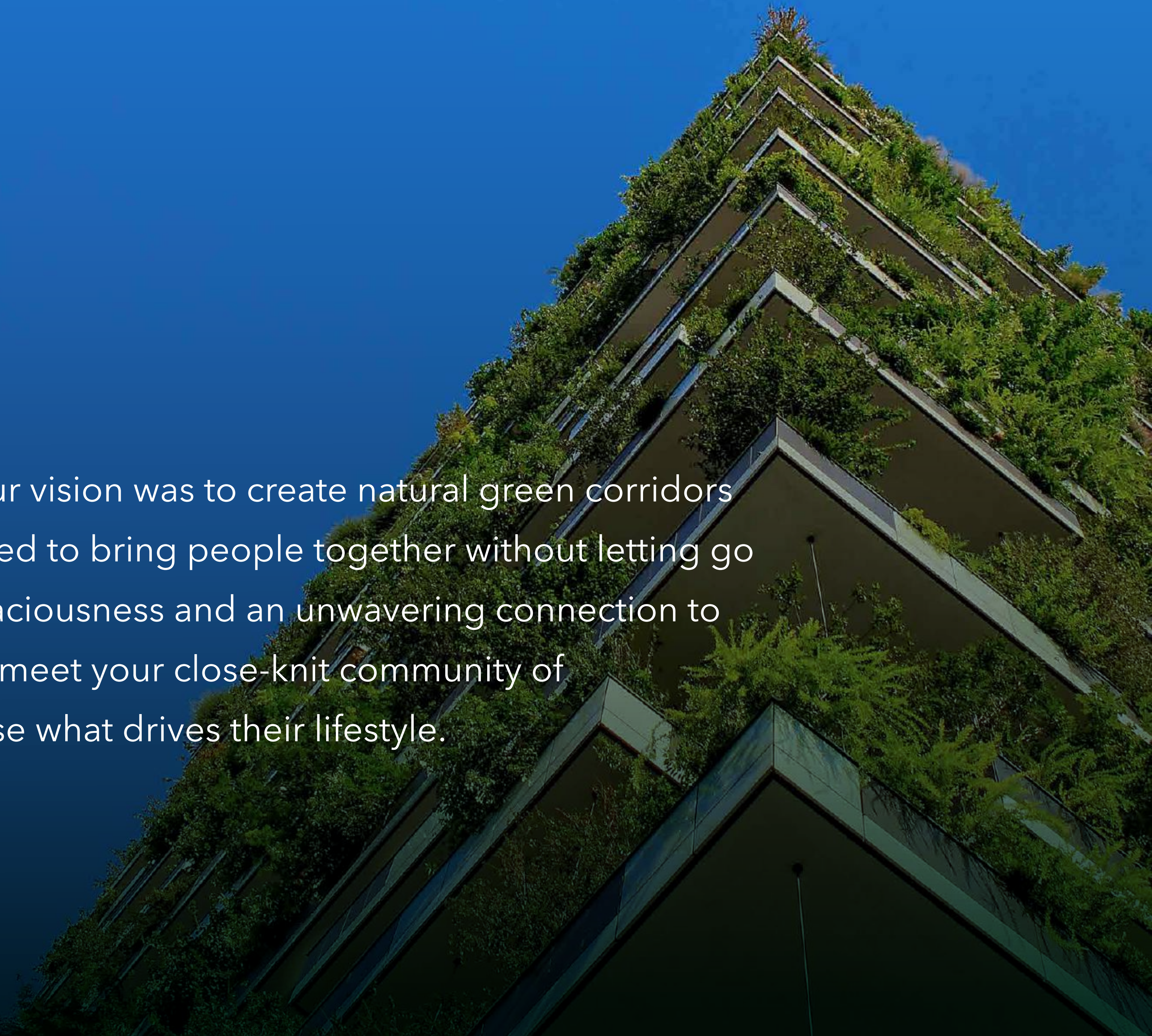


## ABOUT THE PROJECT

Located in the prime northern hub of Bangalore, Gravity Thanisandra brings the home to your apartment. Meet luxury home apartments with a blend of biophilia. Spanning across 4 acres and 3 community towers, each housing 27 floors, the project showcases avante-garde urban green infrastructure.

# EMBRACE THE URBAN GREEN

Transcending mere apartments, our vision was to create natural green corridors within homes. The space is designed to bring people together without letting go of essential modern amenities, spaciousness and an unwavering connection to nature. With a total of 252 homes, meet your close-knit community of like-minded individuals who choose what drives their lifestyle.





**LUXURY HOME APARTMENTS  
@ GRAVITY THANISANDRA**

CRAFTED WITH NATURE. CRAFTED FOR LIFE.

# WHAT MAKES AN APARTMENT FEEL LIKE YOUR HOME?

HERE'S HOW WE DESIGN YOUR  
HOME APARTMENTS

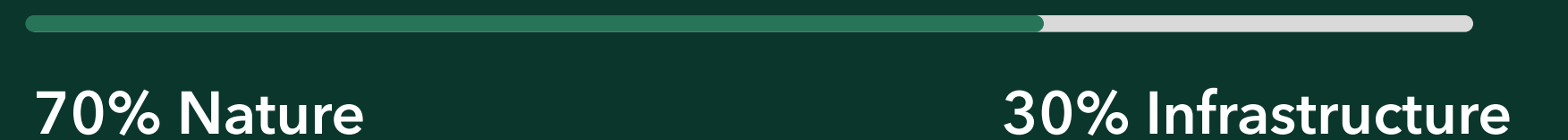


# Time Is ~~MONEY~~ Home

Your apartments are only 30% of the landscape. The rest is nature. Your home in the canopy haven is designed to counter concrete and rising commercialisation for a reduced carbon footprint.

We don't rush your quality time.

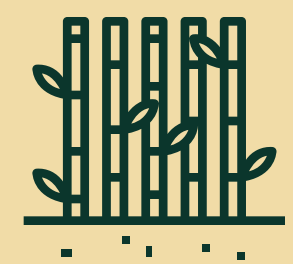
## HOW WE BUILD



# URBAN GREEN INFRASTRUCTURE







**MIYAWAKI FOREST**

Developed by the late Japanese botanist and forest ecologist, **Dr. Akira Miyawaki** is highly acclaimed for his invention of the Miyawaki Forest, **a fast-growing and self-sustaining model mimicking natural forest ecosystems.**

- Dense Planting
- Native Species
- Diverse Variety Planting
- Low Maintenance
- Rapid Growth
- Increased Carbon Capture
- Ecosystem Restoration



# Miyawaki Entrance Stretch

Here's How we Opted Against the Idea  
of a 25,000 sq. ft. Commercial Corridor

Opting against a prime hub commercial corridor, we chose to craft a luxuriant tree-lined canopy that serves as a robust green lung for the apartment entrance and enriches quality of life. The entrance stretch adorns diverse local tree varieties that are signature to the Miyawaki model of mimicking natural forest ecosystems.





First-in-India Bi-Level Miyawaki Corridor

## A Vertical Forest on the 14<sup>th</sup> & 15<sup>th</sup> Floors

With each floor consisting of 12 flats, **we let go of 24 living spaces to design the Miyawaki forest** on the 14th and 15th floors. **A natural buffer** for an enriched lifestyle that redefines our perceptions of vibrant city life:

- Natural Air Purifier
- Microclimate Moderation
- Peaceful Ambience with Reduced Noise
- Reinforcing Biophilic Connection
- A Sense of Serenity for the Community

Heights Above, Forest Below

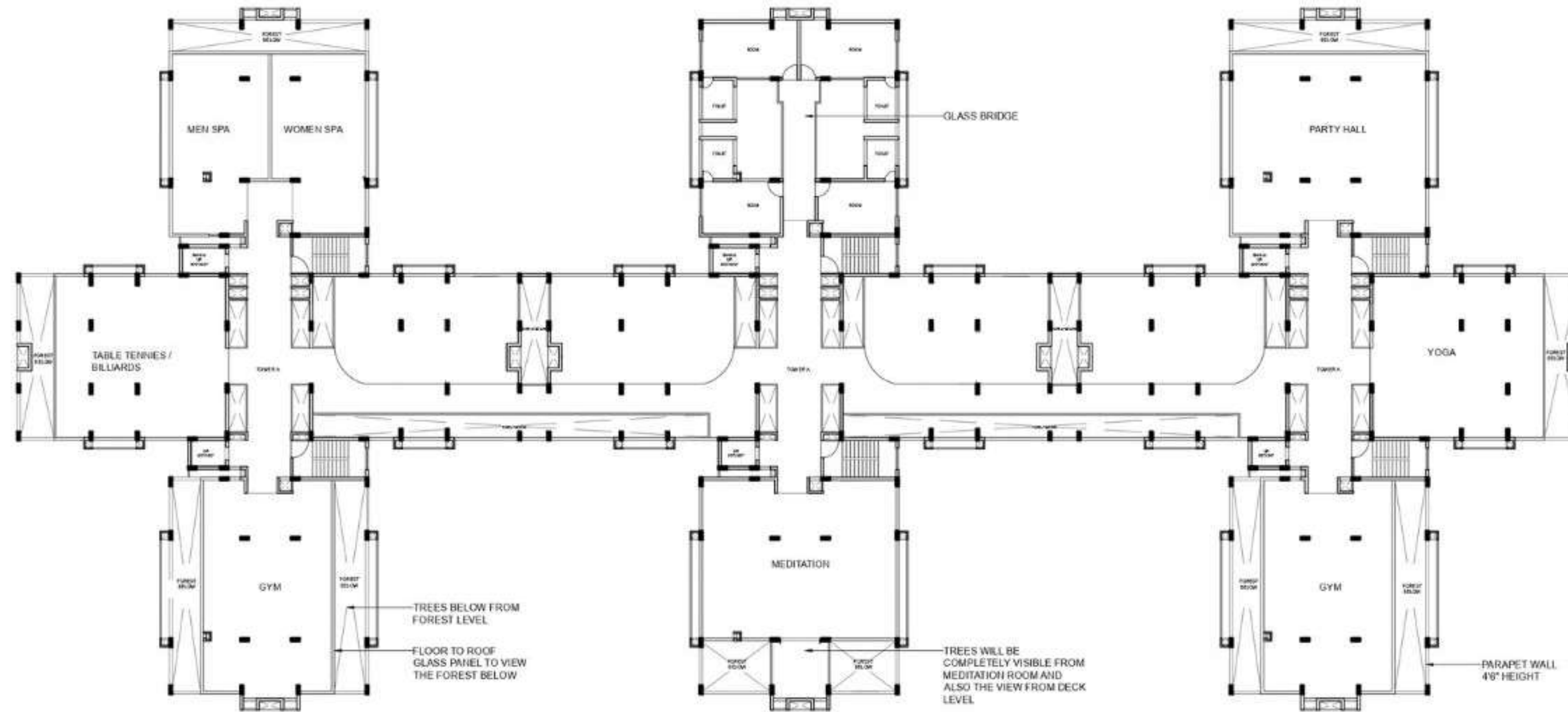
# Forest Haven Clubhouse on the 16<sup>th</sup> Floor

Step into Forest Haven Clubhouse, designed on the 16th Floor and offering **breathtaking panoramas overlooking the lush expanse on the 14th, 15th floors.**

Moving away from a traditional **ground level clubhouse**, we crafted an unparalleled ambience for rejuvenation and reserved the ground to 2nd floors exclusively for parking spaces. **Imagine having the forest allure right below you during your routine yoga sessions.** At Gravity Homes, we promise you not just elevated amenities but an enriched lifestyle.



# Clubhouse Plan @16<sup>th</sup> Floor



KEY PLAN		
PROJECT TITLE		
DRAWING TITLE <b>CLUB HOUSE PLAN @17th FLOOR LEVEL</b>		
ORIENTATION	DEALT BY	
	CHECKED BY	
	SCALE	NOT TO SCALE
	DATE	ISSUE DATE
DRAWING NUMBER :		
GENERAL NOTES		
1. ALL DIMENSIONS IN FEET AND INCHES UNLESS SPECIFIED OTHERWISE. DIMENSIONS ARE TO READ AND NOT MEASURED 2. ALL LEVELS ARE IN FEET AND INCHES UNLESS SPECIFIED OTHERWISE 3. EACH DRAWING SHALL BE READ IN CONJUNCTION WITH ALL OTHER DRAWINGS & THE GENERAL STANDARD DETAILS. THE DRAWINGS SHALL BE CORRELATED WITH THE RELEVANT CONSULTANTS' DRAWINGS AND DETAILS. 4. ANY DISCREPANCY NOTED IN THE DRAWING SHOULD BE BROUGHT TO THE NOTICE OF THE ARCHITECT/STRUCTURAL CONSULTANT BEFORE EXECUTION		
DEVELOPER		
GRAVITY HOLDINGS		
PROMOTER		
MV PROJECTS		
ARCHITECTS		
MAARK VISION ARCHITECTS		
CONSULTANTS		
AREA STATEMENT		
SIGN & SEAL		

The Backdrop To A  
Rejuvenating Retreat

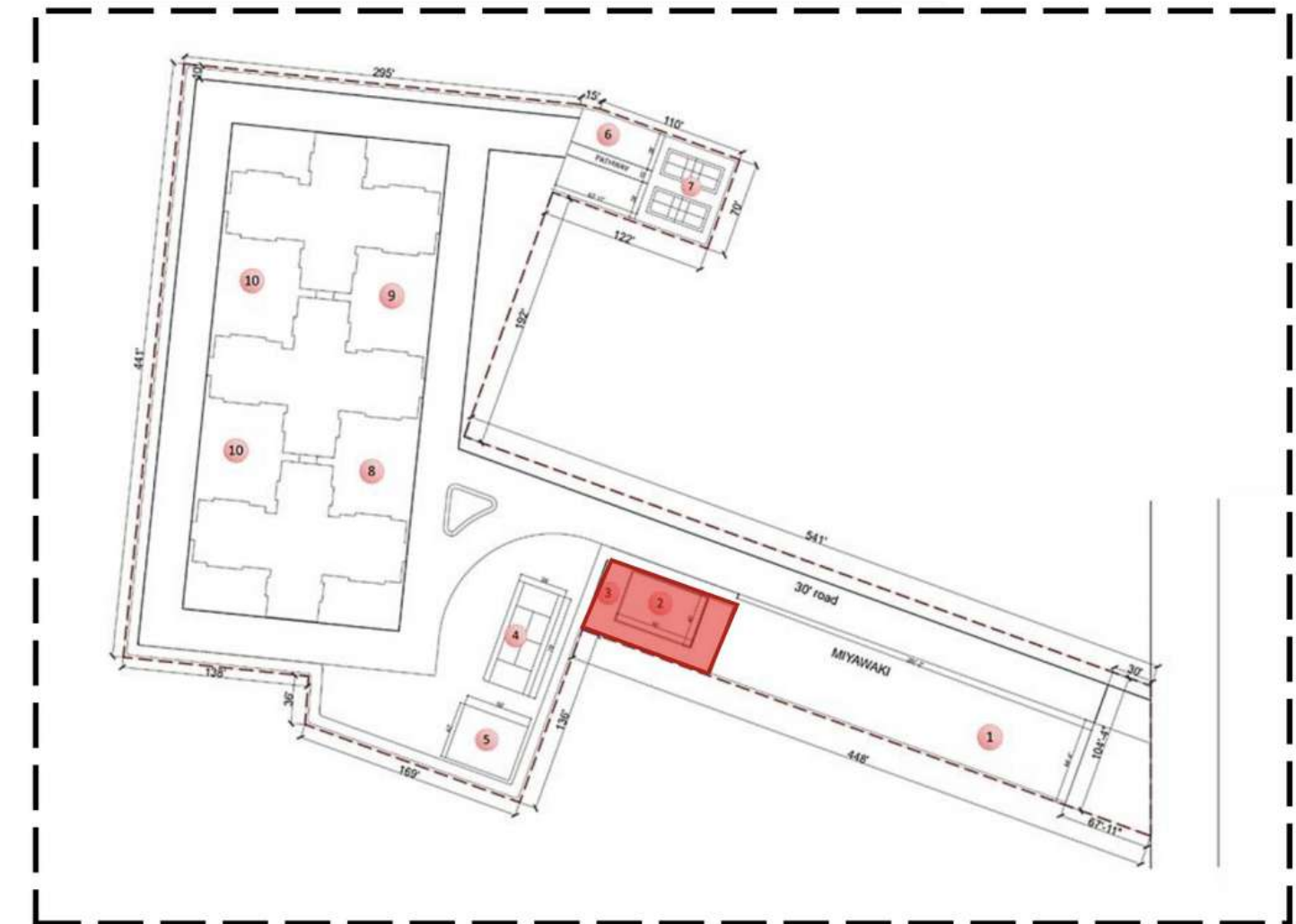
# Integrated Forest Pool

Unlike conventional ceramic tiles or concrete that are highly reliant on chlorine filtration and coated waterproofing, **we used the natural rock and sand bed method** underneath the pool **for a safe and immersive earthen experience.**

Set within the forest embrace and not apart from it, the backdrop to your swimming sessions gets **an indulgent upgrade as you soak the luxury within nature.**



# Pool Key Plan



KEY PLAN



## Peek-A-View!

A lush look of the forest from your home and a glance back at your home from the forest.

# Interconnecting Forest Bridge

Creating a **three-tiered perspective**, the Miyawaki forest incorporates an interconnecting bridge that lends an **immersive forest-like experience**. Offering captivating forest scenes from your home, glimpses of your home from the forest, and an overarching view of the total expanse, **the forest bridge is an architectural marvel between human dwellings and nature.**







# HYDROPONIC FARMING



Greek

hy·dro·pon·ics hydro (water) + ponics (labour)

Helping you grow your own fresh garden produce at home, Hydroponic Farming is a revolutionising technique that is redesigning healthy city lifestyles and engaging families together in a closer connection to nature and quality vegetation.

## Urban Farming and Harvests at Home

- Nutrient-Rich Quality Vegetation
- Balanced pH Controlled Environment
- Water-Efficient Space-Efficient
- Environment-Efficient Diverse Cultivation
- Year-Round Cultivation



## Hydroponic Farming with your Kid at Home

### A Gift of Nature for the Gift to Nature:

A therapeutic natural indulgence that becomes part of your exercise and routine to yield fresh and healthy benefits.

Develop a closer  
connection to the  
roots of Mother Earth

Enhance a new skill

Learn about, respect  
farmers and local  
produce

Plant life cycles,  
awareness and care

Personality growth  
and practice of  
responsibility

Encourage healthy  
eating habits



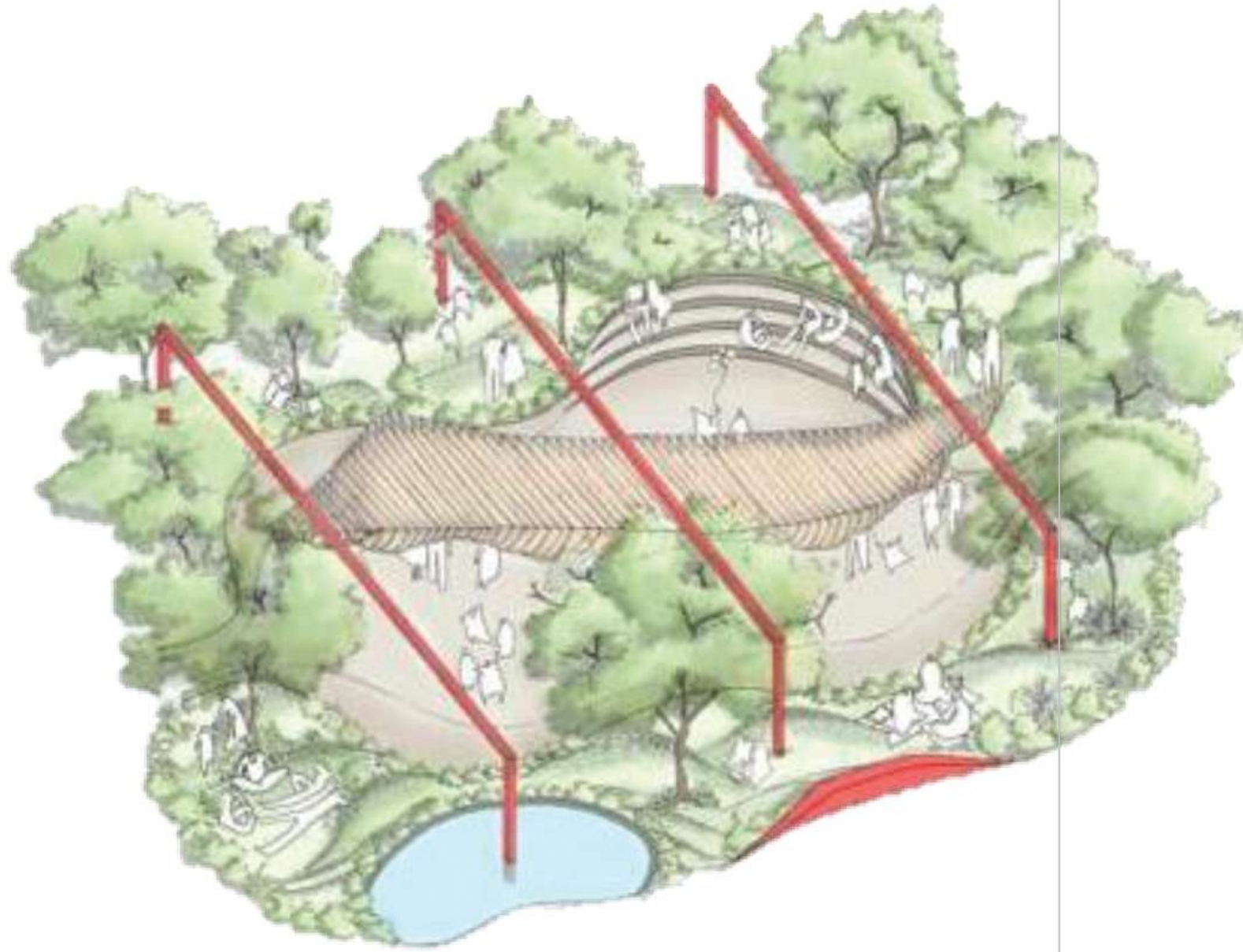


## The Meditative Relaxation Zone

A calming aura, a natural unwind and a soothing meditation nook, the relaxation zone is **designed to cater to the community across all age groups**, allowing for a joyful connection– **nature's cosy lounge of rustling leaves, trickling water sounds, gentle chirps**, and the gentle balm of warm sunlight filtering through leaves.

With homes that cherish your inner peace, we commit to nurture community and belongingness through each project.

## 10. RELAXATION ZONE



KEY PLAN



A modern architectural courtyard featuring a large, leafy tree in the center. To the left, there is a lounge area with a sofa and coffee table. The courtyard is enclosed by a curved skybridge with a lush green living wall. The overall design emphasizes biophilia and space potential.

# SPACE POTENTIAL & BIOPHILIA



EARTH



WATER



FIRE



AIR



SPACE

# Pancha Mahabhuta THE 5 ELEMENTS OF NATURE

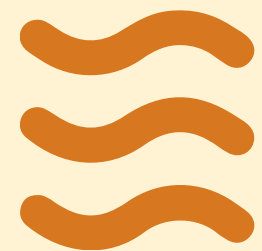


## Natural Rock for Entrance Wall

Constructed from locally sourced natural rock and rubble, the entrance wall embodies the project's biophilia with indigenous elements.

Moreover, its luxurious rustic detailing enhances the visual appeal and adds a tactile charm that blends with the surrounding landscape.





## **Step Parking Design Incorporating Waterfall**

Studies have shown that water allows for a relaxing experience by guiding our neuronal waves and decreasing cortisol levels.

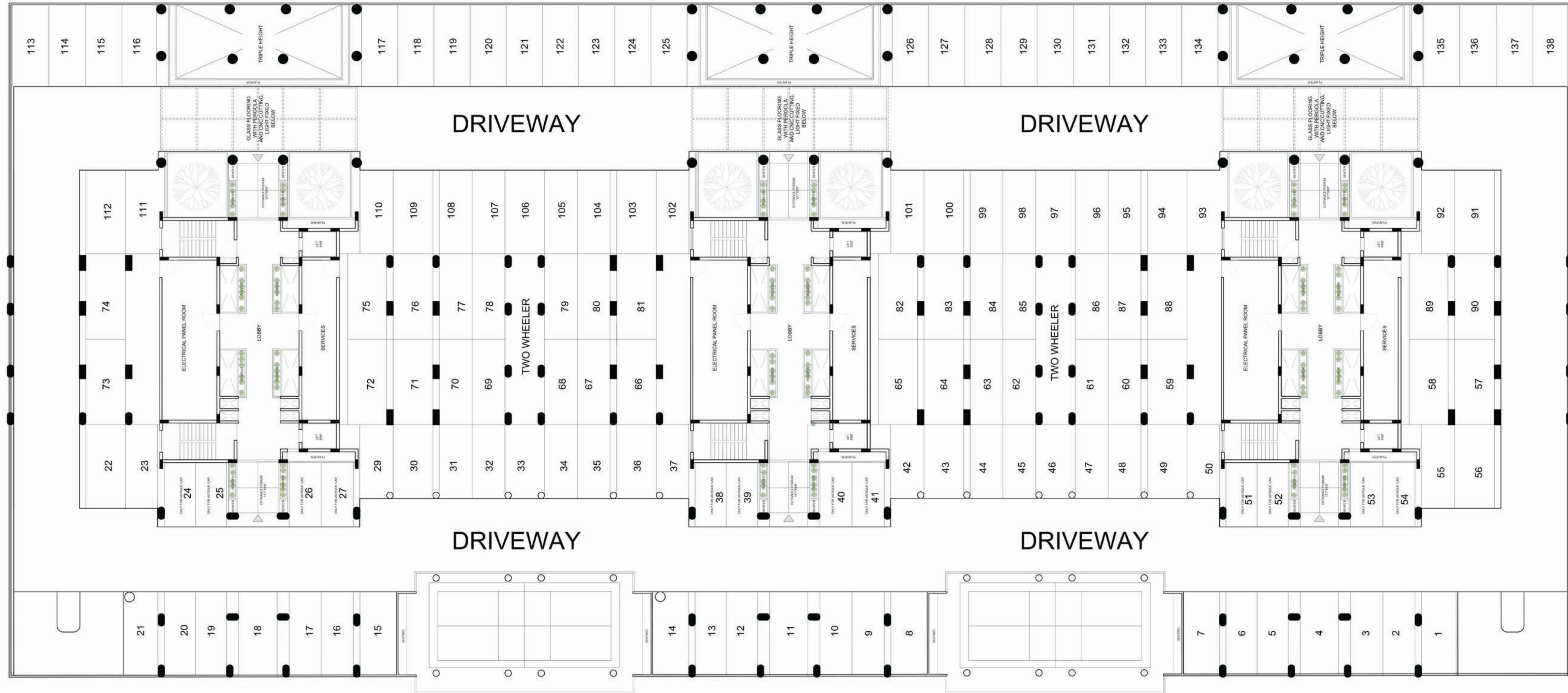
A tier-fashioned parking system that works on optimising land use, step parking is one of the most sought-after efficient parking solutions.

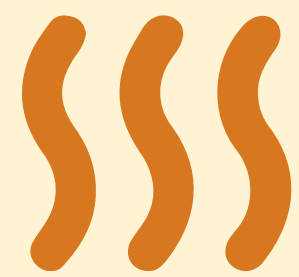


## **Strategically Placed Planters in Parking**

With strategically placed planters throughout the triple-height parking system, the parking space incorporates the project's visual green appeal that acts as a calming respite from dull concrete. From the ground to the 2nd floor, even the parking space has a personality of its own!

# Parking Plan





## Central Atrium

A quality indoor ambience is always more than a **standalone feature**. Blurring the boundaries between nature and your home, a central atrium promotes quality daylight with enhanced ventilation.





## Alternative Balconies

**An innovative approach in urban architecture, the alternative balconies model encourages community engagement while ensuring personal space and privacy.** The design is especially exceptional due to its ability to facilitate interaction with neighbours, not only on the same floor but also on adjacent ones. By blurring the boundaries that come with city life, it creates a **multifaceted and holistic experience.**



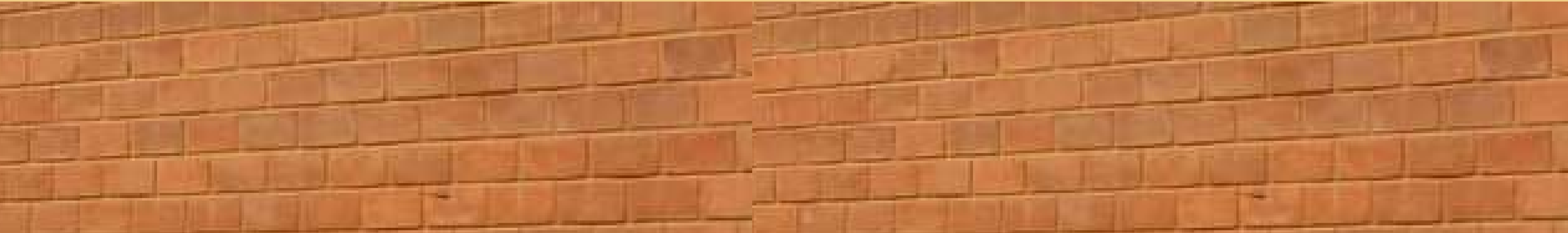
# Exposed Natural Materials

A soothing finish of natural pigments that complements your connection with the natural world.

# Locally-Sourced Materials Constructed On-Site

Utilising traditional, time-honoured materials like mud blocks and cobblestones, **we locally source materials that support our vision of biophilia** and leverage advantages in process efficiency and design customisation.

In addition to sustainability, these also make for an excellent material choice as they are **high on durability, adaptability and performance**. Sourcing locally **supports the local economy, reduces transportation and helps cut down carbon emissions**.



## Eco-Friendly Indian Kota Stones

The famous Kota Stones are a fine grain variety of limestone quartered in Kota, Rajasthan. Multi-purpose and **multi-beneficial**, they are used in flooring, garden paving, wall cladding and more. Not only are these **non-slippery, highly durable and fireproof** but they are also completely non-toxic and non-porous, **have great heat resistance and provide a comfortable barefoot experience at home.**

## Breathable Mud Block Designs

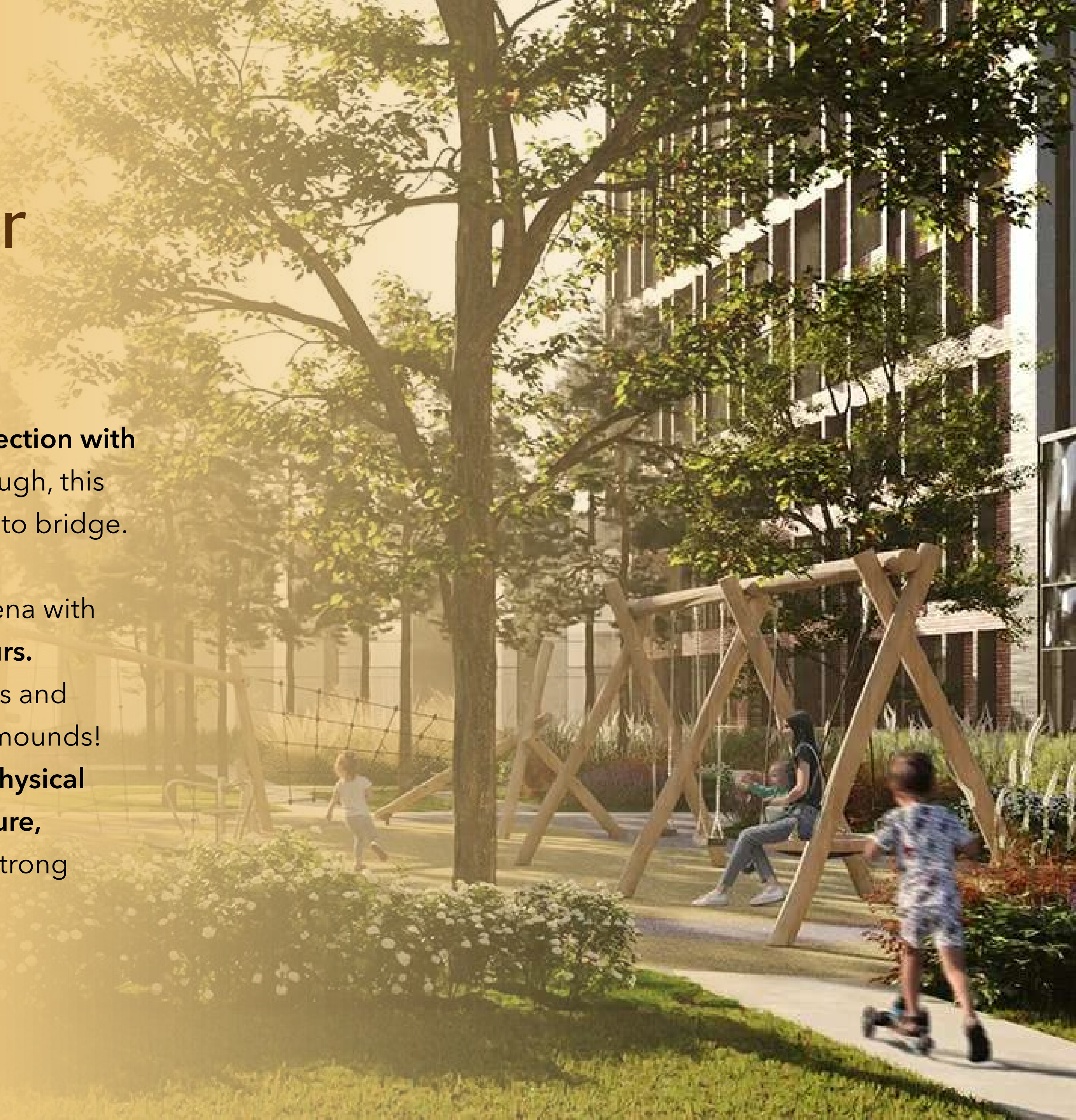
**A traditional and environment-friendly building technique**, mud plasters emit much less greenhouse emissions compared to cement plasters and thereby reduce energy consumption and carbon footprint. Experience **pleasant summers and warm winters with comfort climate control** from this breathable, sustainable, high-thermal-mass material.

# Natural Earth Terrain for Kid's Play Arena

We seek our kids to experience **the same profound connection with nature that enriched our childhood**. In the digital era, though, this increasing disconnect is a clear gap that parents often try to bridge.

Keeping the same in mind, we designed the kids' play arena with **natural undulating surfaces that mirror the earth's contours**.

Here, they get to climb the small hills, slide through slopes and sculpt their own miniature cliffs and dunes from nature's mounds! Through a **simple shift in approach**, we aim to **promote physical activities** and rekindle the much-needed spark of **adventure, compassion and creativity** that comes from cultivating a strong bond with the natural world.



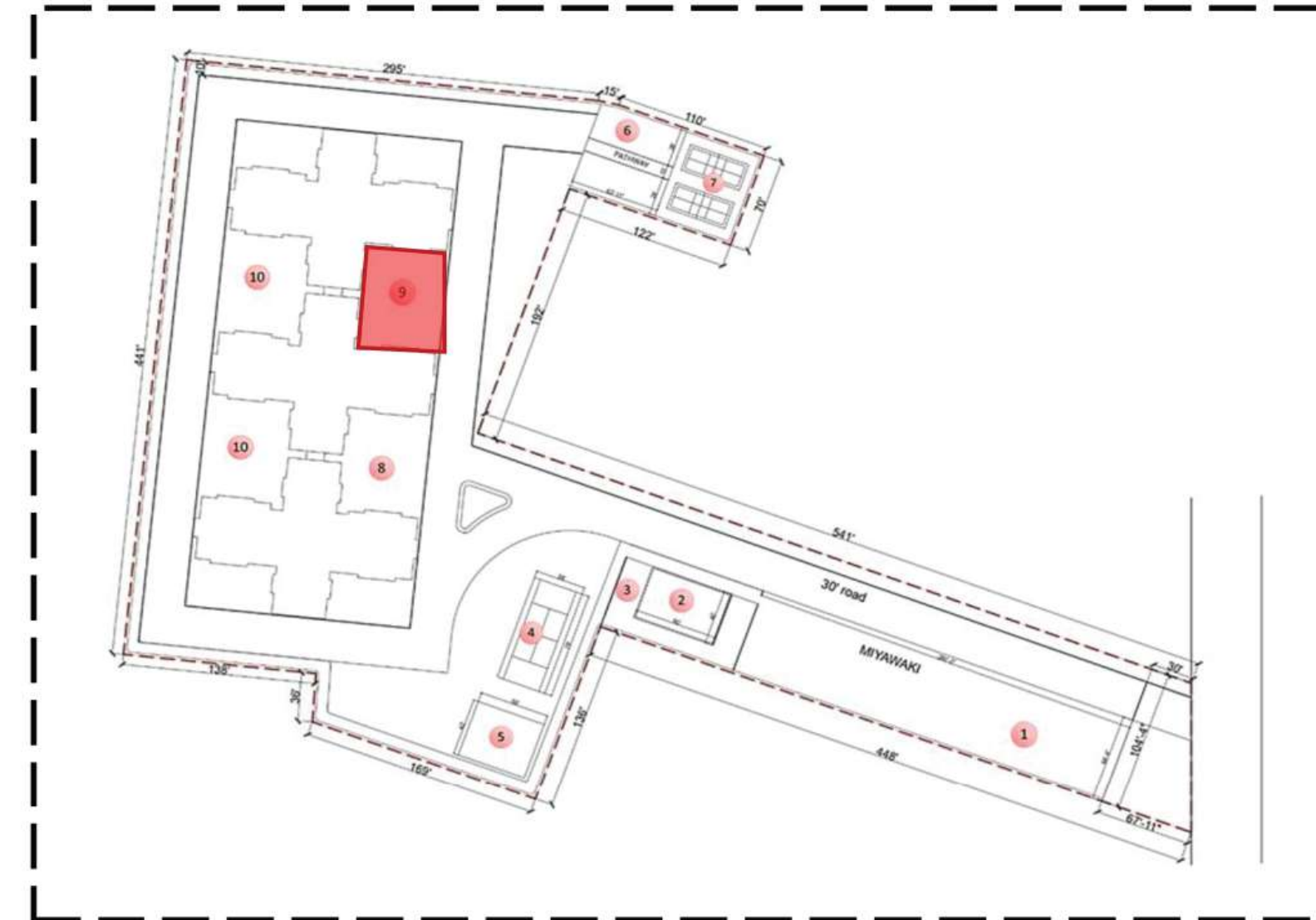
# 8&9 KIDS PLAY AREA/ OUTDOOR GYM



KIDS PLAY AREA



OUTDOOR GYM



KEY PLAN

# Well-Connected Location

- 5 MIN FROM HAJ BHAVAN
- 15 MIN FROM MANYATA TECH PARK
- 15 MIN DRIVE TO OIA BANGALORE
- 15 MIN DRIVE TO BYG BREWSKI
- 20 MIN DRIVE TO AIRPORT ROAD
- 20 MIN DRIVE TO RMZ GALLERIA
- 20 MIN DRIVE TO MOTHERHOOD HOSPITAL
- 20 MIN DRIVE TO VIDYASHILP ACADEMY
- 25 MIN DRIVE TO GKVK UNIVERSITY



## SCHOOLS

- MALLYA ADITI INTERNATIONAL SCHOOL
- VIDYASHILP ACADEMY
- CANADIAN INTERNATIONAL SCHOOL
- STONEHILL INTERNATIONAL SCHOOL
- VIDYA NIKETAN SCHOOL
- COLUMBIA ASIA SCHOOL
- HDFC SCHOOL

## IT & BUSINESS PARKS

- HEBBAL
- MANYATA TECH PARK
- KIRLOSKAR TECH PARK
- PEENYA INDUSTRIAL AREA
- YELAHANKA
- SAHARA NAGAR
- KARLE TOWN CENTRE

## RECREATIONAL HUBS

- RMZ GALLERIA
- MALL OF ASIA
- EMBASSY ONE
- CENTRAL PLAZA
- OIA BANGALORE
- BYG BREWSKI
- THE DRUID GARDEN

## UPCOMING DEVELOPMENTS

- AIRPORT METRO
- PERIPHERAL RING ROAD
- HI-TECH, DEFENCE & AEROSPACE PARK
- IFCI FINANCIAL CITY
- FLYOVER CONNECTED TO JAKKUR MAIN ROAD

## UPCOMING DEVELOPMENTS

- AIRPORT METRO
- PERIPHERAL RING ROAD
- HI-TECH, DEFENCE & AEROSPACE PARK
- IFCI FINANCIAL CITY
- FLYOVER CONNECTED TO JAKKUR MAIN ROAD

## HOSPITALS

- ASTER CMI HOSPITAL
- MOTHERHOOD HOSPITAL

# Namma Serenity



5 KM FROM  
JAKKUR LAKE

Part of the chain of lakes that includes Yelahanka Lake and Rachenahalli Lake, Jakkur Lake is an innovative model of urban wetland conservation.

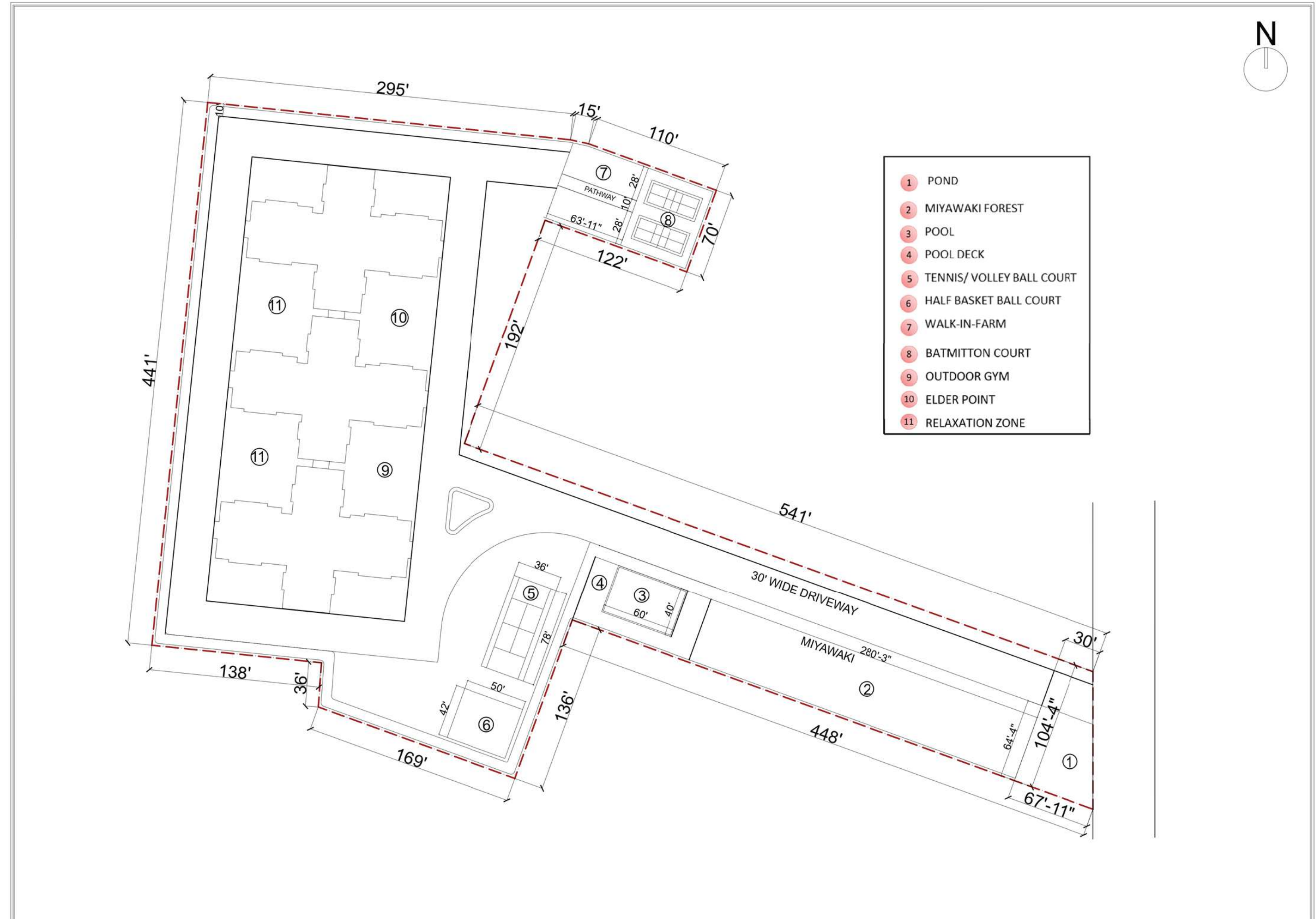
6.5 KM FROM  
RACHENAHALLI LAKE

Situated near Manyata Tech Park, the lake hosts various migratory birds and offers a serene spot for birdwatchers and nature lovers.

10 KM FROM  
HEBBAL LAKE

Spanning over 150 acres, Hebbal Lake is one of the most prominent lakes of Bangalore preserving the city's picturesque ecosystem.

# Master Plan



# The Core of Every Project at Gravity Homes

“The complex and ambiguous relationship between man and nature is central to Indian architecture.”

— Charles Correa, The distinguished “India’s Greatest Architect”, greatly inspirational for altering urban planning with traditional values and nature.



More than builders and developers, we see ourselves as creators of your reality where you trust us with the power to design your home, your world to the daily routines and rhythms of life. By continuously pursuing meaningful risks and challenges, we aim to bring a subtle but strong shift in our industry by speaking of homes that belong with you.



Thank you

for choosing a home  
that breathes with you.

95131 45554 | 97390 11616

   gravityhomesin [www.gravityhomes.in](http://www.gravityhomes.in)

